

SCLA Report

Minnesota District Convention

June 10, 2026

Brian Shult, Executive Director

Brad Essig, Building Principal

Nate Kallies, Principal for
Enrollment and Engagement





UNSHAKABLE PEACE

You will keep in perfect peace those whose minds are steadfast,
because they trust in you ... the Rock eternal. — Isaiah 26:3-4

Celebrating 40 Years in Ministry!



Brent Schacht

Physics, Earth Science,
PE & Health

Boys Track & Field Coach

40 years of service

33 of them at SCLA

Thank you for your service!



Riley Hillstrom



Sam Schoch



Ryan Maertz

2025 - 2026 Enrollment (451)

6th - 8th Grade: 65

9th: 72

10th: 100

11th: 112

12th: 102

Dorm Students: 112

International Students: 97 (17 Countries)

2026 - 2027 Projected Enrollment

6th - 8th Grade: 60

9th - 12th: 390

Dorm Students: 110

International Students: 100

(Approximately 15 countries)

Focus for the Future:

- Expanding our reach into communities and congregations where area lutheran high schools are not currently present.
- Continuing to strengthening both local and international outreach.

2025 - 2026 Highlights

- Bowling State Champions (Class A - First Ever State Championship)
- 11 student-athletes qualified for the State Track & Field Championships
(State Champion in Girls High Jump)
- 5 wrestlers qualified for the State Tournament
- 5 athletic teams reached Section Finals
- 13 seniors signed collegiate athletic letters of intent
- 8 WSMA Solo & Ensemble participants earned top ratings
- MSHSL Section Art Show: 9 Superior ratings, 1 Judge's Spotlight Award
- 2nd place – MS First LEGO League World Festival
- 4th place – Supermileage Club (first year of competition)





Kwik Trip

TEEA 2026 Supermileage Challenge
SuperSport

State Farm

SITRA

UP NORTH
HUNTING

New North

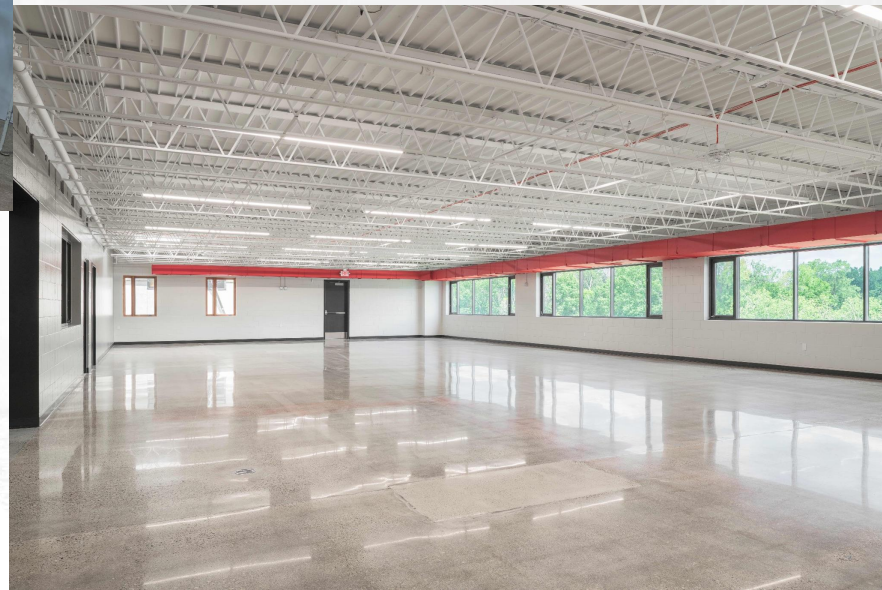
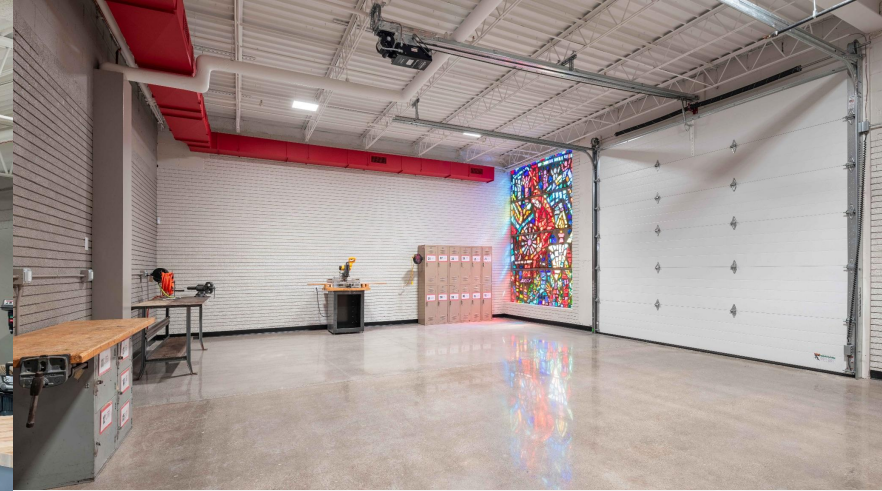
2025 - 2026 Highlights & Future

- 70+ students went or will be going on Mission Trips
 - Includes Costa Maya Ministries (Mexico) & Vietnam in July
- Partnership with St. John / San Juan on SCLA Campus
- 8 seniors accepted into MLC
- National Merit Scholarship Finalist
- Campus Security (2026-2027 School Year)
- Bell to Bell - No Cell (2026-2027 School Year)

Tekton

Renovated Old Dorm Building

- Career and Technological Education classroom - 4,600 sq ft
- Multipurpose sports room - 3,100 sq ft
- General and seasonal storage - 3,500 sq ft
- Dedicated concessions area with storage
- Four single-occupancy restrooms



- 184 Students (MS & HS)
- Woodworking 1 & 2, and Construction Architecture







